



TEXAS

FLUORESCENTS

# SPS Series

4" x 4" Square Pole

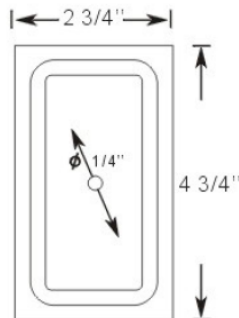
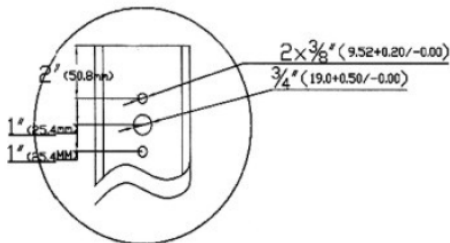
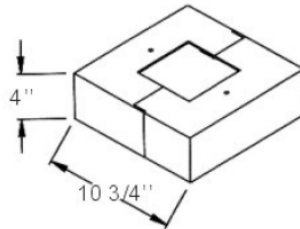
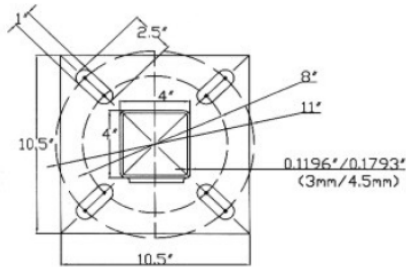
## FEATURES & SPECIFICATIONS

- Fabricated from the Highest Grade Structural Steel Cast Iron on Selected Models
- Conforms to ASTM-A-500 Grade B: Minimum Yield Strength of 46,000 PSI
- Choice of Two Shaft Strengths:
  - Minimum Yield of 46,000 PSI
  - Minimum Yield of 55,000 PSI (Special Order)
- Polyester Powder-Coat Finish on Sandblasted Surface Chemical Treated to ensure Maximum Paint Adhesion. Baked at 400° to ensure Maximum Hardness and Durability
- Wall Thickness available in Gage 11 (.120") or Gage 7 (.180")
- Anchor Bolts (J-Bolts). Sold Separately



## INCLUDED WITH POLE

- Polycarbonate (Lexan®) Spring Loaded Cover
- 12 Top Holes with Polycarbonate (Lexan®) Bushings
- Reinforced Cast Iron Hand-Hole with Ground Screw Included
- Easily Secured Base Cover
- Special Packing for Safe Shipping



\* Consult for more options

# SPS Series

5" x 5" Square Pole

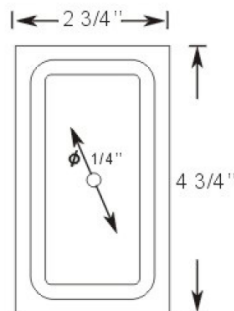
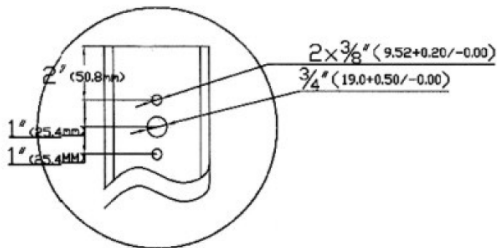
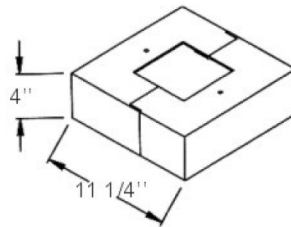
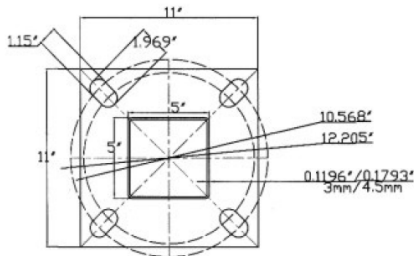
## FEATURES & SPECIFICATIONS

- Fabricated from the Highest Grade Structural Steel Cast Iron on Selected Models
- Conforms to ASTM-A-500 Grade B: Minimum Yield Strength of 46,000 PSI
- Choice of Two Shaft Strengths:
  - Minimum Yield of 46,000 PSI
  - Minimum Yield of 55,000 PSI (Special Order)
- Polyester Powder-Coat Finish on Sandblasted Surface Chemical Treated to ensure Maximum Paint Adhesion. Baked at 400° to ensure Maximum Hardness and Durability
- Wall Thickness available in Gage 11 (.120") or Gage 7 (.180")
- Anchor Bolts (J-Bolts). Sold Separately



## INCLUDED WITH POLE

- Polycarbonate (Lexan®) Spring Loaded Cover
- 12 Top Holes with Polycarbonate (Lexan®) Bushings
- Reinforced Cast Iron Hand-Hole with Ground Screw Included
- Easily Secured Base Cover
- Special Packing for Safe Shipping



\* Consult for more options

Catalog Number:
Notes:



T E X A S

F L U O R E S C E N T S

# SPS Series

Square Pole

PART NUMBER (46,000 PSI)	Shaft Size	Gage	Base Plate Size	Bolt Circle	Bolt Size	Weight (LBS)	Wind Data (See Table Below)
SPS16411	16'	11	10.5"x10.5"X3/4"	9"-3/16"	3/4"X30"	126	1
SPS20411	20'	11	10.5"x10.5"X3/4"	9"-3/16"	3/4"X30"	146	2
SPS25411	25'	11	10.5"x10.5"X3/4"	12"-3/4"	1"X36"	176	3
SPS3057	30'	7	11"X 11"X 1"	12"X3/4"	1"X36"	406	4
SPS30511	30'	11	11"X 11"X 1"	12"X3/4"	1"X36"	290	5

Wind Data (See Pole # Above)	Pole	80 MPH Max EPA	80 MPH Max Fixture Weight (LBS)	90 MPH Max EPA	90 MPH Max Fixture Weight (LBS)	100 MPH Max EPA	100 MPH Max Fixture Weight (LBS)
1	16' 4SQ 11Ga .	15 .8	399	12 .3	348	9 .6	312
2	20' 4SQ 11Ga .	10 .1	320	7 .6	279	5 .7	275
3	25' 4SQ 11Ga .	6.2	250	3 .8	225	2 .0	200
4	30 ' 5SQ 7Ga .	12 .8	321	8 .9	271	5.8	238
5	30' 5SQ 11Ga .	6 .1	250	3 .2	200	N/A	N/A

\* Consult for more options

Catalog Number:
Notes: