

SLSL Series

Shallow Linear Spread Lighting

FEATURES & SPECIFICATIONS

INTENDED USE

The new Shallow Linear Spread Lighting is ideal for open offices or any place where low glare, comfortable lighting is required; especially good for applications where a lot of monitors are in use. Fixtures can be used individually or joined for a continuous run. The connections between the housings are made by means of a concealed locking mechanism that provides a hairline joint in continuous row applications. Shielding includes choices of perforations, slots and baffled louver for a choice of uplight and downlight effects. It has a center semi-specular baffle or a matte white lens to provide 30% downlight coupled with a choice of solid sides for more uplight or perforated sides for extra side light. This shallow body is available in 3 light T5 or 2 Light T8 only. A well engineered reflector system ensures maximum efficiency over 84% and light spread.

FEATURES

- Indirect/Direct suspended lighting fixture; Indirect is 70% and direct is 30%.
- The direct component is controlled by 3" wide semi-specular aluminum baffles standard or opaque overlay (by others)
- This unit is designed for two T8 lamps or up to three T5 lamps.
- Fixture will also accept T8 LED tubes.
- Designed for low brightness illumination without shadows for general office or classroom applications where 85 to 90% efficiency is needed. All reflectors necessary for performance are supplied as standard.
- Fixture is 9-5/8" wide by 2-1/2" high.
- Housing can be differentiated by specifying perforations on the bottom sides parallel to the center slot or perforations on the top sides or both. You design the look that you want to achieve.
- Fixture can be modified for LED "circuit on board" applications and will accept daylight and/or motion detectors.

SIZE W x L x H in inches (mm)

4ft. - 9 5/8" x 48" x 2 1/2"

8ft. - 9 5/8" x 96" x 2 1/2"

LAMP

1, 2, or 3 lamp positions

CONSTRUCTION

The die-formed steel housing is available with open bottom for specular louver or matte white lens, with riveted, heavy duty, die-cast aluminum mounting plates. Fixtures are shipped with die cast aluminum joiners for structural integrity and suspension continuity. Reflectors are enhanced aluminum for maximum efficiency for direct and indirect control. Housing and end caps are standard with our exclusive finish featuring an ultra durable white powder top coat. Custom finishes available.

ENDCAPS

Architectural ends. This die cast aluminum end comes with a scoop styled configuration. They are bolted to the die cast joiners for a complete architectural look.

MOUNTING

Fixtures are designed to mount on exact 4ft and 8ft centers. Joiners will accept stems, single cable, "V" cable, and power cords as supplied by others. Mount with 5' or 15' adjustable cable (2 for 4' unit or 8' unit, included). Consult factory for longer cables.



LISTING

UL Listed.

TYPICAL OPTIONS AND ACCESSORIES

Emergency ballasts, LED ready, or LED arrays. Contact factory for additional options.

SLSL Series

Shallow Linear Spread Lighting



TEXAS
FLUORESCENTS

ORDERING INFORMATION

Example: SLSLLV232MVWH-HC301WH

SLSL	LV	2	32			MV	WH	HC301	WH
Series			Lamp Type [1]				Finish		Cord & Canopy Finish
SLSL Shallow Linear Spread			32 48 in. T8 28 46 in. T5 54 46 in. T5HO				WH White SL Metallic Silver RD Red IN Iron BK Black		WH White BK Black BKWH Black cord & White Canopy BKSL Black Cord & Silver Canopy
		Lamp Count			Side Body			Cable Kit	
		1*, 2, or 3** Lamps Not included			blank Solid PF Perforated			HC301 4 ft. cable kit HC302 8 ft. cable kit	
Center Body			Tandem Code		Ballast & Voltage [1]			Options [1]	
MW White Lens LV Baffle / Blade			blank No Tandem 8 8 ft. Tandem		MV Electronic, Multivolt (120-277) HMV Electronic, Multivolt, Hi-Lume [3] PMV Electronic, Multivolt, Program Start Ballast			EM Emergency ballast, 500 lumens EM14 Emergency ballast, 1400 lumens	
					X1 LEDT8 Single Ended X2 LEDT8 Double Ended XX No ballast or wiring			Note: EM14 required for T5HO lamps	

*3 light only available in T5 or T5HO

**2 light only available in T8

Notes

[1] See end of T02LINEAR for many additional lamps, ballasts, finishes, and options.

[2] Custom louvers available in any cell configuration. Consult factory for additional information.

[3] HiLume and LoLume ballasts available for T8 lamps only.

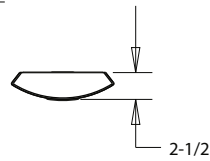
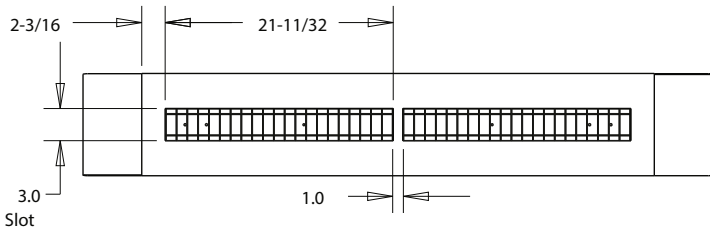
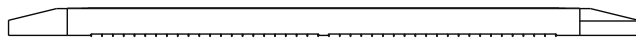
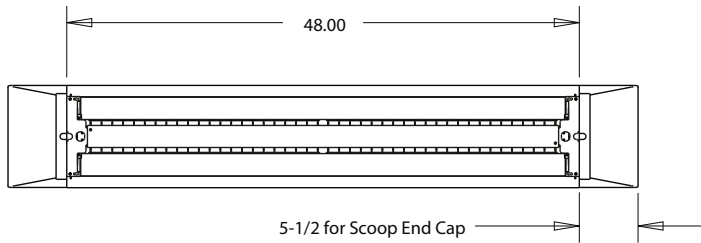
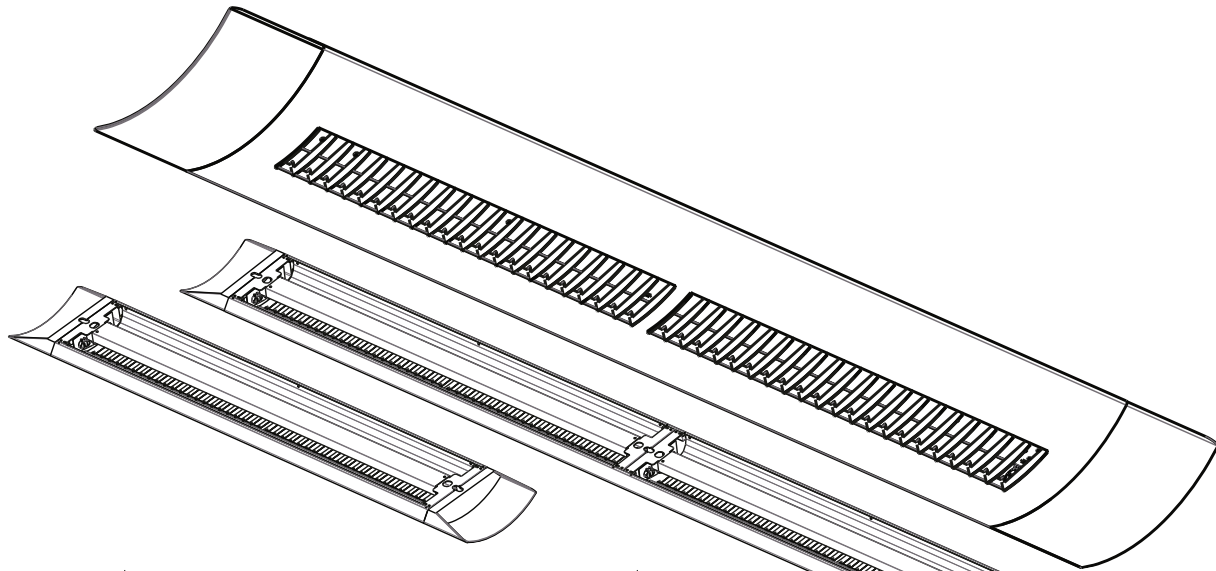
Catalog Number:

Notes:

Texas Fluorescents
2055 Luna Rd. Suite 142 Carrollton, TX 75006
Phone: 972-247-3171 Fax: 972-247-0200
www.texasfluorescents.com email: sales@texasfluorescents.com

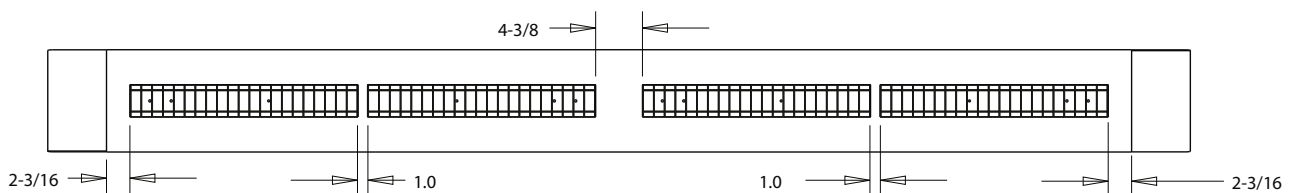
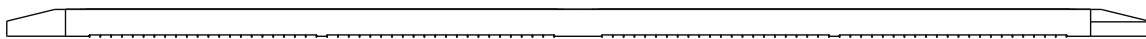
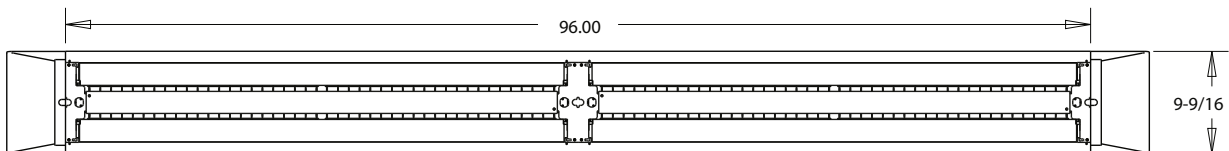
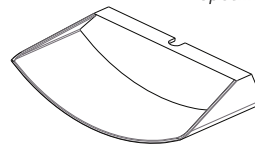
SLSL Series

Shallow Linear Spread Lighting



T8	
SIZE	LENGTH
(2) 32W	48
(4) 32W	96

Add 5-1/2" for each end cap
Specifications subject to change without notice.



Catalog Number: _____
Notes: _____