

## FEATURES & SPECIFICATIONS

### INTENDED USE

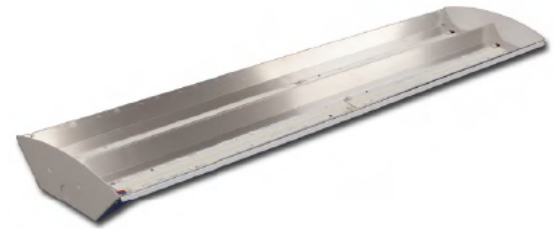
High efficiency LED engineered for premium performance in medium and high ceiling applications ideally suited for warehouses, manufacturing plants, sports facilities and retail spaces. A precision-formed reflector system available in highly reflective enhanced white reflector achieve maximum light output for ceilings from 15 feet to 40 feet. The unique arrangement is ideal for wide area lighting to put the light exactly where you need it with less fixtures. Based on ceiling height, these fixtures can replace an HID high bay using half of the wattage. Surface, pendant, chain or stem mounting. Highest quality materials and workmanship.

### SIZE W x L x H in inches (mm)

11.39W x 48.1L x 3.62Dp

### CONSTRUCTION

Housing is 22 gauge prepainted steel. Air vents surround the drivers in the back of the fixture to maximize LED and driver performance, reliability and life. High reflective enhanced white reflectors are computer designed to maximize photometric performance and put the light where you need it. Access plate in the back makes wiring fast and hassle-free. Back of fixture is designed with built-in mounting holes for tong hanger, cable kit and surface mount.



### MOUNTING

Designed for surface, pendant, stem or chain hanging. Mounting holes are provided for simple, fast installation. See Buyers Guide for list of all mounting options available and sold separately.

### TYPICAL OPTIONS AND ACCESSORIES

Emergency ballasts, Cord sets, whips, occupancy sensors, Hanging kits, Wire guards. Contact factory for additional options.

## ORDERING INFORMATION

Example: HBC48LH118W13500LW30DMV50K

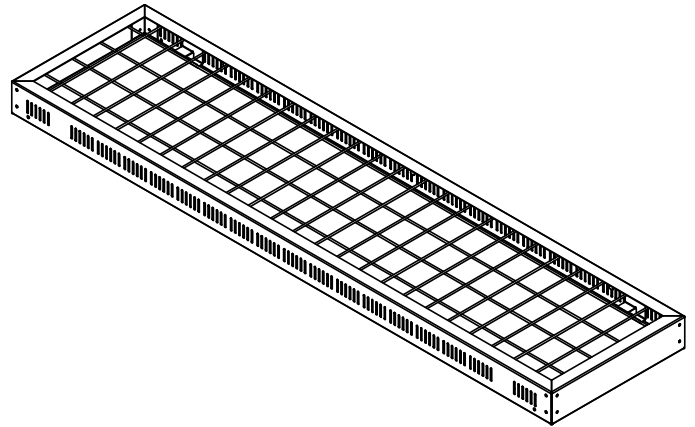
HBCN48L		H118W13500L		W30		DMV		50K		Options	
Lens		Reflector		Driver		Kelvin Temperature					
<b>Blank</b>	No Lens	<b>W30</b>	White Steel reflector, no uplight, standard distribution	<b>DMV</b>	0-10V Dimming *Field installed-Dimming Wire	<b>30K</b>	3000K			<b>MDT4</b>	Occupancy Sensor Wide Angle
<b>DFFR*</b>	Door Frame with Frosted Smooth Acrylic			<b>DMVFID</b>	0-10V Dimming *Factory installed-Dimming Wire	<b>35K</b>	3500K			<b>MDF4</b>	Occupancy Sensor and Daylight
<b>Series</b>		<b>Wattage and Lumen</b>				<b>40K</b>	4000K			<b>CS</b>	5-15P 120V 8ft. Cord & Plug
<b>HBCN</b>		<b>H70W8000L</b>	70 System Watts, 8000 Delivered Lumens			<b>50K</b>	5000K			<b>CS12</b>	L7-15P 277V 8ft. Cord & Plug
4ft LED High Bay		<b>H93W10000L</b>	93 System Watts, 10000 Delivered Lumens							<b>CS08</b>	8ft. Cord, No Plug
Full Body Low Bay		<b>N106W14000L</b>	106 System Watts, 14000 Delivered Lumens							<b>WP</b>	6 ft. 3 wire, Whip
		<b>N124W16000L</b>	124 System Watts, 16000 Delivered Lumens							<b>WP10</b>	6ft. 4 Wire, Whip
		<b>N171W20300L</b>	171 System Watts, 20300 Delivered Lumens							<b>EM</b>	10W, 90mins, 120-277Vac

\*DFFR is only available for 70W, 93W and 106W

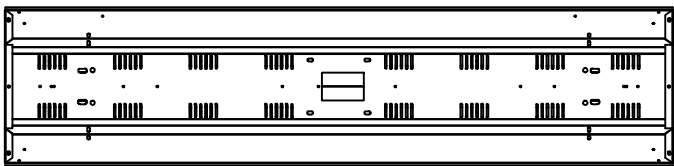
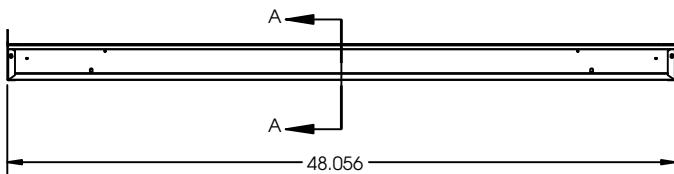
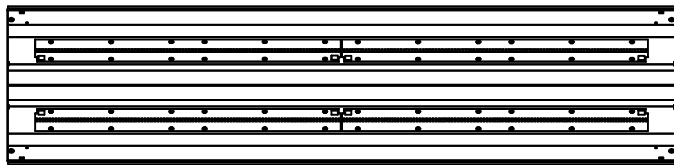
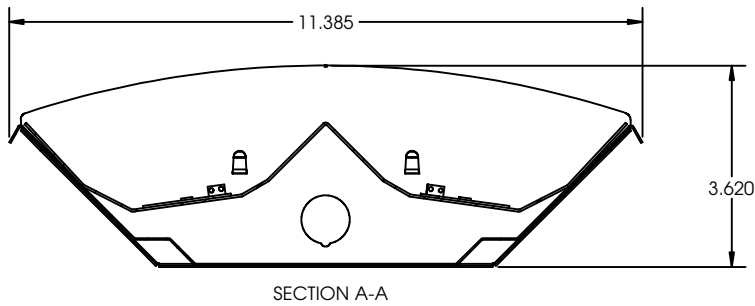


**DIMENSIONS**

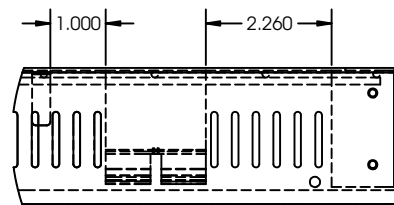
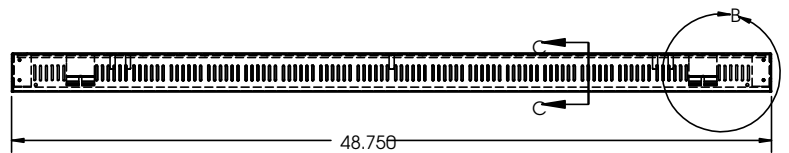
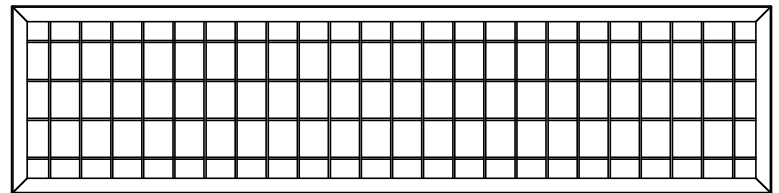
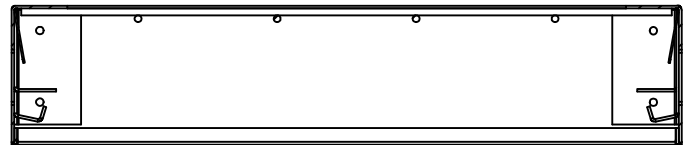
All dimensions are inches. Specifications subject to change without notice.



**Housing Dimensions**



**Door Frame Dimensions**



DETAIL B

