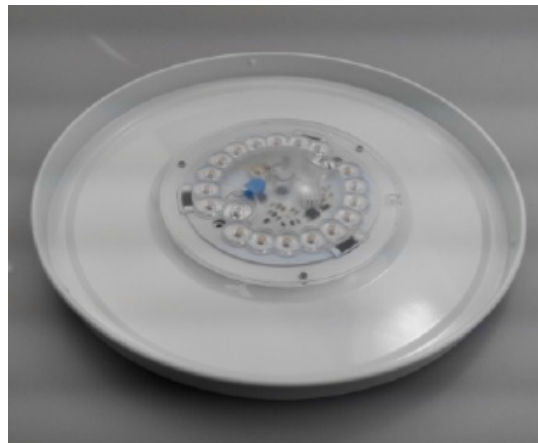
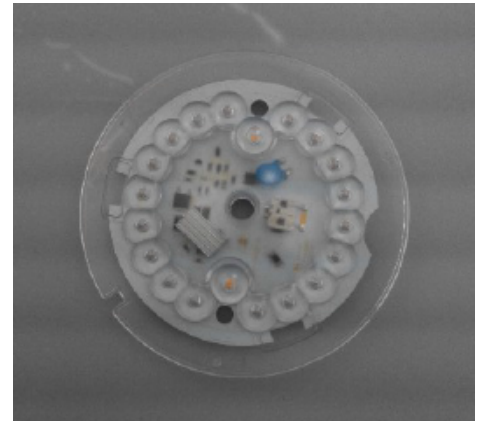


FEATURES & SPECIFICATIONS

15watt LED LIGHT ENGINE

- On board driver technology
- Polycarbonate protective optical lens
- Input Power: 15W
- Lumen Output: 1350lm
- Equivalent to 100W incandescent
- Input Voltage: 120VAC
- Frequency: 50/60Hz
- Color Temperature: 3000K , 4000K, 5000K
- Beam Angle: 120 degree
- CRI>80
- Power Factor: ≥ 0.9
- 5 Year warranty
- Damp Location
- Operating Temp. Range:-20-45C
- Lifespan: 50,000 Hours



25watt LED LIGHT ENGINE

- On board driver technology
- Polycarbonate protective optical lens
- Input Power: 25W
- Lumen Output: 1850lm
- Equivalent to 150W incandescent
- Input Voltage: 120VAC
- Frequency: 50/60Hz
- Color Temperature: 3000K , 4000K, 5000K
- Beam Angle: 120 degree
- CRI>80
- Power Factor: ≥ 0.9
- 5 Year warranty
- Damp Location
- Operating Temp. Range:-20-45C
- Lifespan: 50,000 Hours



DIMENSIONS

All dimensions are inches. Specifications subject to change without notice. Consult factory for additional information.

ORDERING INFORMATION

Example: DAC12W1000LD12040K

DAC	12W1000L		D120	40K	
Series	Wattage and Lumen		Driver	Kelvin Temperature	
DAC	15W1350L	15 System Watts, 1350 Delivered Lumens	D120	30K	3000K
	25W1850L	25 System Watts, 1850 Delivered Lumens	120V Dimmable Driver	40K	4000K
				50K	5000K

Catalog Number:
Notes: