

131 2' x 4'

LED Lensed Troffer, Grid Mount

FEATURES AND SPECIFICATIONS

Intended Use

Specification grade, low profile troffer meets an almost limitless range of applications where energy efficiency, high light output, durable construction and unobtrusive styling is desired. Troffer is ideal for all commercial and industrial buildings requiring general illumination with recessed configurations. LED version is ideal where maintenance, energy savings and color rendering are particularly crucial.

Features Overview

The 131 Series LED Troffers feature a choice of LED arrays and drivers to meet a range of full distribution output and wattage choices. With the 131 LED Series, flexibility is a key feature. No longer need to sacrifice output, color or energy usage with this series, you can specify exactly what you need. Choice of four color temperatures. Choice of dimming driver with 0 to 10 Volt operation. Full selection of diffusers available along with other options.

Shielding

Standard lens is high transmission pattern #12 acrylic (A12) for light diffusion which maximize light output. Other lens are available and may be specified. See below options.

Size W x L x H in inches

23.75W x 48.0L x 4.0Dp

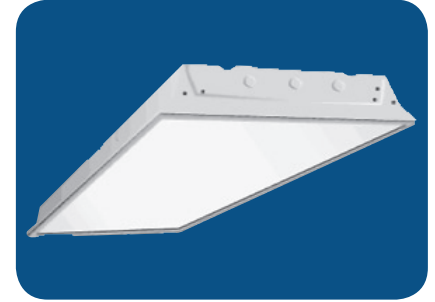
LED Engine

Programmable Driver changes LED Array output to provide different outputs.

Materials & Features

Housing is die-formed and embossed code 22 gage steel. Finish is high reflectance baked white enamel. Wiring knockouts are provided on back and end of housing. Driver cover or reflector snaps into place; no tools required for ballast access. Lens is held with a hinged steel door frame; frame hinges downward on either side and is held closed by two positive cam latched.

- POST PAINTED POWDER COAT FINISH on certain versions
- Shallow design for low clearance plenums
- Clear 0.10thk A12 acrylic lens is standard; many options available
- Flush steel hinges from either side; field reversible
- Access plate to simplify installation



Mounting & Installation

An access plate is furnished with each recessed fixture for fast wiring connections without necessity to pen the fixture or wireway. Designed for recessed installation in standard inverted tee grid ceiling, recessed installation in hard ceilings with FIK kits (sold separately), surface mount available with shroud kit (sold as complete item).

Warranty

Five Year Warranty. See Terms and Conditions.

Typical Options and Accessories

Emergency battery backup, whips, regressed doors, wire guards, frame kits, and lenses. See options page at the end on the T02Grid section, or contact factory for more details.



ORDERING INFORMATION

Example: 131A24LF35W3650DMV40K

STANDARD

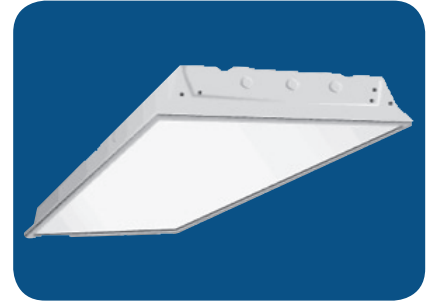
131	A	24L	F35W3650L	DMV	40K
Series		Size	Wattage and Lumen	Driver	Color Temperature
131 LED Lensed Troffer, Grid Mount		24L 2 x 4	F35W3650L 35 System Watts, 3650 Delivered Lumens F45W5500L 45 System Watts, 5500 Delivered Lumens F48W4800L 48 System Watts, 4800 Delivered Lumens F56W6050L 56 System Watts, 6050 Delivered Lumens	DMV 0-10V Dimming	30K 3000K 35K 3500K 40K 4000K 50K 5000K
Lens Material			Options		
A	Prismatic Acrylic #12 Pattern		WP 6 ft. 3 wire 18 gauge whip		
A.125	Prismatic Acrylic #12 Pattern 1/8"		WP10 6 ft. 4 wire 18 gauge whip		
MW	Matte White Acrylic		EM 10W Battery Backup for 90mins		
SP1	Specular Parabolic Louver 1/2" x 1/2" x 3/8"				
SP4	Specular Parabolic Louver 3/4" x 3/4" x 1/2"				
SP2	Specular Parabolic Louver 1 1/2" x 1 1/2" x 1"				
PLA	White Cubed Acrylic Louver 1/2" x 1/2" x 3/8"				
FR	Frosted Acrylic Smooth Lens .04", 100% Dura Frost				
			Value Line		
			V46Y 5500N	46 System Watts, 5500 Delivered Lumens	

*Consult for more options

Catalog Number:
Notes:

131 2' x 4'

LED Lensed Troffer, Grid Mount



ORDERING INFORMATION

HIGH OUTPUT

Example: **131A24LH72W8700LDMV40K**

131	A	24L	H72W8700L	DMV	40K								
Series		Size	Wattage and Lumen	Driver	Color Temperature								
131 LED Lensed Troffer, Grid Mount		24L 2 x 4	H72W8700L 72 System Watts, 8700 Delivered Lumens	DMV 0-10V Dimming	<table border="0"> <tr><td>30K</td><td>3000K</td></tr> <tr><td>35K</td><td>3500K</td></tr> <tr><td>40K</td><td>4000K</td></tr> <tr><td>50K</td><td>5000K</td></tr> </table>	30K	3000K	35K	3500K	40K	4000K	50K	5000K
30K	3000K												
35K	3500K												
40K	4000K												
50K	5000K												
Lens Material					Options								
A	Prismatic Acrylic #12 Pattern				<table border="0"> <tr><td>WP</td><td>6 ft. 3 wire 18 gauge whip</td></tr> <tr><td>WP10</td><td>6 ft. 4 wire 18 gauge whip</td></tr> <tr><td>EM</td><td>10W Battery Backup for 90mins</td></tr> </table>	WP	6 ft. 3 wire 18 gauge whip	WP10	6 ft. 4 wire 18 gauge whip	EM	10W Battery Backup for 90mins		
WP	6 ft. 3 wire 18 gauge whip												
WP10	6 ft. 4 wire 18 gauge whip												
EM	10W Battery Backup for 90mins												
A.125	Prismatic Acrylic #12 Pattern 1/8"												
MW	Matte White Acrylic												
SP1	Specular Parabolic Louver 1/2" x 1/2" x 3/8"												
SP4	Specular Parabolic Louver 3/4" x 3/4" x 1/2"												
SP2	Specular Parabolic Louver 1 1/2" x 1 1/2" x 1"												
PLA	White Cubed Acrylic Louver 1/2" x 1/2" x 3/8"												
FR	Frosted Acrylic Smooth Lens .04", 100% Dura Frost												

*Consult for more options

*Consult for more options



Catalog Number:
Notes:



FLUORESCENTS

FEATURES AND SPECIFICATIONS

Intended Use

Specification grade, low profile troffer meets an almost limitless range of applications where energy efficiency, high light output, durable construction and unobtrusive styling is desired. Troffer is ideal for all commercial and industrial buildings requiring general illumination with recessed configurations. LED version is ideal where maintenance, energy savings and color rendering are particularly crucial.

Features Overview

The 131 Series LED Troffers feature a choice of LED arrays and drivers to meet a range of full distribution output and wattage choices. With the 131 LED Series, flexibility is a key feature. No longer need to sacrifice output, color or energy usage with this series, you can specify exactly what you need. Choice of four color temperatures. Choice of dimming driver with 0 to 10 Volt operation. Full selection of diffusers available along with other options.

Shielding

Standard lens is high transmission pattern #12 acrylic (A12) for light diffusion which maximize light output. Other lens are available and may be specified. See below options.

Size W x L x H in inches

23.75W x 24.0L x 4.0Dp

LED Engine

Programmable Driver changes LED Array output to provide different outputs.

Materials & Features

Housing is die-formed and embossed code 22 gage steel. Finish is high reflectance baked white enamel. Wiring knockouts are provided on back and end of housing. Driver cover or reflector snaps into place; no tools required for ballast access. Lens is held with a hinged steel door frame; frame hinges downward on either side and is held closed by two positive cam latched.

- POST PAINTED POWDER COAT FINISH on certain versions
- Shallow design for low clearance plenums
- Clear 0.10thk A12 acrylic lens is standard; many options available
- Flush steel hinges from either side; field reversible
- Access plate to simplify installation

131 2' x 2'

LED Lensed Troffer, Grid Mount



Mounting & Installation

An access plate is furnished with each recessed fixture for fast wiring connections without necessity to pen the fixture or wireway. Designed for recessed installation in standard inverted tee grid ceiling, recessed installation in hard ceilings with FIK kits (sold separately), surface mount available with shroud kit (sold as complete item).

Warranty

Five Year Warranty. See Terms and Conditions.

Typical Options and Accessories

Emergency battery backup, whips, regressed doors, wire guards, frame kits, and lenses. See options page at the end on the T02Grid section, or contact factory for more details.

ORDERING INFORMATION

Example: 131A22LF28W2700LDMV40K

STANDARD

131	A	22L	F28W2700L	DMV	40K
Series		Size	Wattage and Lumen	Driver	Kelvin Temperature
131 LED Lensed Troffer, Grid Mount		22L 2 x 2	F20W2300L 20 System Watts, 2300 Delivered Lumens F24W2600L 24 System Watts, 2600 Delivered Lumens F28W3000L 28 System Watts, 3000 Delivered Lumens F35W3600L 35 System Watts, 3600 Delivered Lumens F45W4500L 45 System Watts, 4500 Delivered Lumens	DMV 0-10V Dimming	30K 3000K 35K 3500K 40K 4000K 50K 5000K
Lens Material			Options		
A	Prismatic Acrylic #12 Pattern		WP 6 ft. 3 wire 18 gauge whip		
A.125	Prismatic Acrylic #12 Pattern 1/8"		WP10 6 ft. 4 wire 18 gauge whip		
MW	Matte White Acrylic		EM 10W Battery Backup for 90mins		
SP1	Specular Parabolic Louver 1/2" x 1/2" x 3/8"				
SP4	Specular Parabolic Louver 3/4" x 3/4" x 1/2"				
SP2	Specular Parabolic Louver 1 1/2" x 1 1/2" x 1"				
PLA	White Cubed Acrylic Louver 1/2" x 1/2" x 3/8"				
FR	Frosted Acrylic Smooth Lens .04", 100% Dura Frost				

Catalog Number:
Notes:

*Consult for more options



131 1' x 4'

LED Lensed Troffer, Grid Mount

FEATURES AND SPECIFICATIONS

Intended Use

Specification grade, low profile troffer meets an almost limitless range of applications where energy efficiency, high light output, durable construction and unobtrusive styling is desired. Troffer is ideal for all commercial and industrial buildings requiring general illumination with recessed configurations. LED version is ideal where maintenance, energy savings and color rendering are particularly crucial.

Features Overview

The 131 Series LED Troffers feature a choice of LED arrays and drivers to meet a range of full distribution output and wattage choices. With the 131 LED Series, flexibility is a key feature. No longer need to sacrifice output, color or energy usage with this series, you can specify exactly what you need. Choice of four color temperatures. Choice of dimming driver with 0 to 10 Volt operation. Full selection of diffusers available along with other options.

Shielding

Standard lens is high transmission pattern #12 acrylic (A12) for light diffusion which maximize light output. Other lens are available and may be specified. See below options.

Size W x L x H in inches

11.75W x 48.0L x 4.0Dp

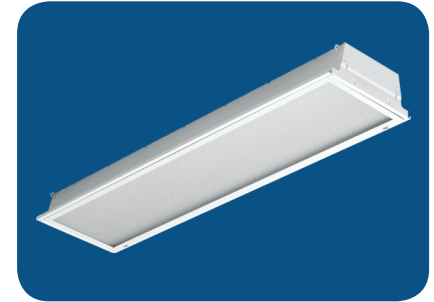
LED Engine

Programmable Driver changes LED Array output to provide different outputs.

Materials & Features

Housing is die-formed and embossed code 22 gage steel. Finish is high reflectance baked white enamel. Wiring knockouts are provided on back and end of housing. Driver cover or reflector snaps into place; no tools required for ballast access. Lens is held with a hinged steel door frame; frame hinges downward on either side and is held closed by two positive cam latched.

- POST PAINTED POWDER COAT FINISH on certain versions
- Shallow design for low clearance plenums
- Clear 0.10thk A12 acrylic lens is standard; many options available
- Flush steel hinges from either side; field reversible
- Access plate to simplify installation



Mounting & Installation

An access plate is furnished with each recessed fixture for fast wiring connections without necessity to pen the fixture or wireway. Designed for recessed installation in standard inverted tee grid ceiling, recessed installation in hard ceilings with FIK kits (sold separately), surface mount available with shroud kit (sold as complete item).

Warranty

Five Year Warranty. See Terms and Conditions.

Typical Options and Accessories

Emergency battery backup, whips, regressed doors, wire guards, frame kits, and lenses. See options page at the end on the T02Grid section, or contact factory for more details.

ORDERING INFORMATION

Example: 131A14LF32W3450LDMV40K

STANDARD

131	A	14L	F32W3450L	DMV	40K
Series		Size	Wattage and Lumen	Driver	Kelvin Temperature
131 LED Lensed Troffer, Grid Mount		14L 1 x 4	F22W2800L 22 System Watts 2800 Delivered Lumens F30W3600L 30 System Watts, 3600 Delivered Lumens F35W4100L 35 System Watts, 4100 Delivered Lumens F40W4600L 40 System Watts, 4600 Delivered Lumens F48W5400L 48 System Watts, 5400 Delivered Lumens F57W6400L 57 System Watts, 6400 Delivered Lumens	DMV 0-10V Dimming	30K 3000K 35K 3500K 40K 4000K 50K 5000K
Lens Material					
A	Prismatic Acrylic #12 Pattern				
A.125	Prismatic Acrylic #12 Pattern 1/8"				
MW	Matte White Acrylic				
SP1	Specular Parabolic Louver 1/2" x 1/2" x 3/8"				
SP4	Specular Parabolic Louver 3/4" x 3/4" x 1/2"				
SP2	Specular Parabolic Louver 1 1/2" x 1 1/2" x 1"				
PLA	White Cubed Acrylic Louver 1/2" x 1/2" x 3/8"				
FR	Frosted Acrylic Smooth Lens .04", 100% Dura Frost				
Value Line					
V46Y 5500N			46 System Watts, 5500 Delivered Lumens		
Options					
WP		6 ft. 3 wire 18 gauge whip			
WP10		6 ft. 4 wire 18 gauge whip			
EM		10W Battery Backup for 90mins			

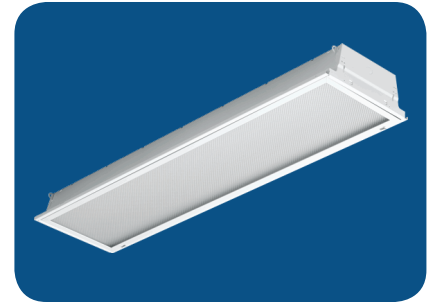
*Consult for more options



Catalog Number:
Notes:

131 1' x 4'

LED Lensed Troffer, Grid Mount



ORDERING INFORMATION

HIGH OUTPUT

Example: 131A14LH72W8400LDMV40K

131	A	14L	H72W8400L	DMV	40K	
Series		Size	Wattage and Lumen	Driver	Kelvin Temperature	
131 LED Lensed Troffer, Grid Mount		14L 1 x 4	H72W8400L 72 System Watts, 8400 Delivered Lumens	DMV 0-10V Dimming	30K 3000K 35K 3500K 40K 4000K 50K 5000K	
Lens Material					Options	
A	Prismatic Acrylic #12 Pattern				WP	6 ft. 3 wire 18 gauge whip
A.125	Prismatic Acrylic #12 Pattern 1/8"				WP10	6 ft. 4 wire 18 gauge whip
MW	Matte White Acrylic				EM	10W Battery Backup for 90mins
SP1	Specular Parabolic Louver 1/2" x 1/2" x 3/8"					
SP4	Specular Parabolic Louver 3/4" x 3/4" x 1/2"					
SP2	Specular Parabolic Louver 1 1/2" x 1 1/2" x 1"					
PLA	White Cubed Acrylic Louver 1/2" x 1/2" x 3/8"					
FR	Frosted Acrylic Smooth Lens .04", 100% Dura Frost					

*Consult for more options



Catalog Number:
Notes: