

# 131 2' x 4'

## LED Lensed Troffer, Grid Mount

### FEATURES AND SPECIFICATIONS

#### Intended Use

Specification grade, low profile troffer meets an almost limitless range of applications where energy efficiency, high light output, durable construction and unobtrusive styling is desired. Troffer is ideal for all commercial and industrial buildings requiring general illumination with recessed configurations. LED version is ideal where maintenance, energy savings and color rendering are particularly crucial.

#### Features Overview

The 131 Series LED Troffers feature a choice of LED arrays and drivers to meet a range of full distribution output and wattage choices. With the 131 LED Series, flexibility is a key feature. No longer need to sacrifice output, color or energy usage with this series, you can specify exactly what you need. Choice of four color temperatures. Choice of dimming driver with 0 to 10 Volt operation. Full selection of diffusers available along with other options.

#### Shielding

Standard lens is high transmission pattern #12 acrylic (A12) for light diffusion which maximize light output. Other lens are available and may be specified. See below options.

#### Size W x L x H in inches

23.75W x 48.0L x 4.0Dp

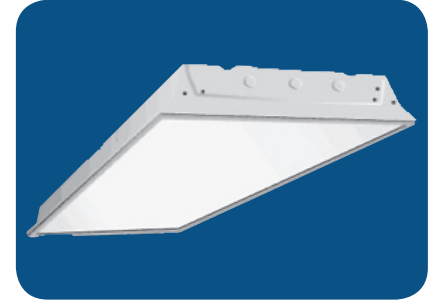
#### LED Engine

Programmable Driver changes LED Array output to provide different outputs.

#### Materials & Features

Housing is die-formed and embossed code 22 gage steel. Finish is high reflectance baked white enamel. Wiring knockouts are provided on back and end of housing. Driver cover or reflector snaps into place; no tools required for ballast access. Lens is held with a hinged steel door frame; frame hinges downward on either side and is held closed by two positive cam latched.

- POST PAINTED POWDER COAT FINISH on certain versions
- Shallow design for low clearance plenums
- Clear 0.10thk A12 acrylic lens is standard; many options available
- Flush steel hinges from either side; field reversible
- Access plate to simplify installation



#### Mounting & Installation

An access plate is furnished with each recessed fixture for fast wiring connections without necessity to pen the fixture or wireway. Designed for recessed installation in standard inverted tee grid ceiling, recessed installation in hard ceilings with FIK kits (sold separately), surface mount available with shroud kit (sold as complete item).

#### Warranty

Five Year Warranty. See Terms and Conditions.

#### Typical Options and Accessories

Whips, regressed doors, frame kits, and lenses. See options page at the end on the T02Grid section, or contact factory for more details.



### ORDERING INFORMATION

Example: 131A24LF35W3650LDMV40K

#### STANDARD

131	A	24L	F35W3650L	DMV	40K
Series		Size	Wattage and Lumen	Driver	Color Temperature
131 LED Lensed Troffer, Grid Mount		24L 2 x 4	<b>F35W3650L</b> 35 System Watts, 3650 Delivered Lumens <b>F45W5500L</b> 45 System Watts, 5500 Delivered Lumens <b>F48W4800L</b> 48 System Watts, 4800 Delivered Lumens <b>F56W6050L</b> 56 System Watts, 6050 Delivered Lumens	DMV 0-10V Dimming	<b>30K</b> 3000K <b>35K</b> 3500K <b>40K</b> 4000K <b>50K</b> 5000K
					<b>Options</b> <b>WP</b> 6 ft. 3 wire 18 gauge whip <b>WP10</b> 6 ft. 4 wire 18 gauge whip
<b>Lens Material</b>					
A Prismatic Acrylic #12 Pattern					

\*Consult for more options

Catalog Number:
Notes:



T E X A S

F L U O R E S C E N T S

### FEATURES AND SPECIFICATIONS

#### Intended Use

Specification grade, low profile troffer meets an almost limitless range of applications where energy efficiency, high light output, durable construction and unobtrusive styling is desired. Troffer is ideal for all commercial and industrial buildings requiring general illumination with recessed configurations. LED version is ideal where maintenance, energy savings and color rendering are particularly crucial.

#### Features Overview

The 131 Series LED Troffers feature a choice of LED arrays and drivers to meet a range of full distribution output and wattage choices. With the 131 LED Series, flexibility is a key feature. No longer need to sacrifice output, color or energy usage with this series, you can specify exactly what you need. Choice of four color temperatures. Choice of dimming driver with 0 to 10 Volt operation. Full selection of diffusers available along with other options.

#### Shielding

Standard lens is high transmission pattern #12 acrylic (A12) for light diffusion which maximize light output. Other lens are available and may be specified. See below options.

Size W x L x H in inches

23.75W x 24.0L x 4.0Dp

#### LED Engine

Programmable Driver changes LED Array output to provide different outputs.

#### Materials & Features

Housing is die-formed and embossed code 22 gage steel. Finish is high reflectance baked white enamel. Wiring knockouts are provided on back and end of housing. Driver cover or reflector snaps into place; no tools required for ballast access. Lens is held with a hinged steel door frame; frame hinges downward on either side and is held closed by two positive cam latched.

- POST PAINTED POWDER COAT FINISH on certain versions
- Shallow design for low clearance plenums
- Clear 0.10thk A12 acrylic lens is standard; many options available
- Flush steel hinges from either side; field reversible
- Access plate to simplify installation

# 131 2' x 2'

## LED Lensed Troffer, Grid Mount



#### Mounting & Installation

An access plate is furnished with each recessed fixture for fast wiring connections without necessity to pen the fixture or wireway. Designed for recessed installation in standard inverted tee grid ceiling, recessed installation in hard ceilings with FIK kits (sold separately), surface mount available with shroud kit (sold as complete item).

#### Warranty

Five Year Warranty. See Terms and Conditions.

#### Typical Options and Accessories

Emergency battery backup, whips, regressed doors, frame kits, and lenses. See options page at the end on the T02Grid section, or contact factory for more details.



### ORDERING INFORMATION

Example: 131A22LF28W2700LDMV40K

#### STANDARD

131	A	22L	F28W2700L	DMV	40K
<b>Series</b>		<b>Size</b>	<b>Wattage and Lumen</b>	<b>Driver</b>	<b>Kelvin Temperature</b>
131		22L 2 x 2	<b>F20W2300L</b> 20 System Watts, 2300 Delivered Lumens	DMV 0-10V Dimming	30K 3000K 35K 3500K 40K 4000K 50K 5000K
LED Lensed Troffer, Grid Mount			<b>F24W2600L</b> 24 System Watts, 2600 Delivered Lumens		
<b>Lens Material</b>			<b>F28W3000L</b> 28 System Watts, 3000 Delivered Lumens		
A	Prismatic Acrylic #12 Pattern		<b>F35W3600L</b> 35 System Watts, 3600 Delivered Lumens		
			<b>F45W4500L</b> 45 System Watts, 4500 Delivered Lumens		
				<b>Options</b>	
				WP	6 ft. 3 wire 18 gauge whip
				WP10	6 ft. 4 wire 18 gauge whip
				EM	10W Battery Backup for 90mins

\*Consult for more options

Catalog Number:
Notes:

# 131 1' x 4'

## LED Lensed Troffer, Grid Mount

### FEATURES AND SPECIFICATIONS

#### Intended Use

Specification grade, low profile troffer meets an almost limitless range of applications where energy efficiency, high light output, durable construction and unobtrusive styling is desired. Troffer is ideal for all commercial and industrial buildings requiring general illumination with recessed configurations. LED version is ideal where maintenance, energy savings and color rendering are particularly crucial.

#### Features Overview

The 131 Series LED Troffers feature a choice of LED arrays and drivers to meet a range of full distribution output and wattage choices. With the 131 LED Series, flexibility is a key feature. No longer need to sacrifice output, color or energy usage with this series, you can specify exactly what you need. Choice of four color temperatures. Choice of dimming driver with 0 to 10 Volt operation. Full selection of diffusers available along with other options.

#### Shielding

Standard lens is high transmission pattern #12 acrylic (A12) for light diffusion which maximize light output. Other lens are available and may be specified. See below options.

**Size** W x L x H in inches

11.75W x 48.0L x 4.0Dp

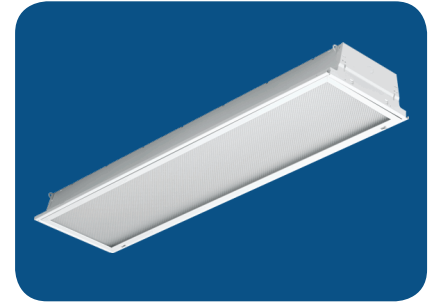
#### LED Engine

Programmable Driver changes LED Array output to provide different outputs.

#### Materials & Features

Housing is die-formed and embossed code 22 gage steel. Finish is high reflectance baked white enamel. Wiring knockouts are provided on back and end of housing. Driver cover or reflector snaps into place; no tools required for ballast access. Lens is held with a hinged steel door frame; frame hinges downward on either side and is held closed by two positive cam latched.

- POST PAINTED POWDER COAT FINISH on certain versions
- Shallow design for low clearance plenums
- Clear 0.10thk A12 acrylic lens is standard; many options available
- Flush steel hinges from either side; field reversible
- Access plate to simplify installation



#### Mounting & Installation

An access plate is furnished with each recessed fixture for fast wiring connections without necessity to pen the fixture or wireway. Designed for recessed installation in standard inverted tee grid ceiling, recessed installation in hard ceilings with FIK kits (sold separately), surface mount available with shroud kit (sold as complete item).

#### Warranty

Five Year Warranty. See Terms and Conditions.

#### Typical Options and Accessories

Emergency battery backup, whips, regressed doors, frame kits, and lenses. See options page at the end of the T02Grid section, or contact factory for more details.



### ORDERING INFORMATION

Example: 131A14LF32W3450LDMV40K

#### STANDARD

131	A	14L	F32W3450L	DMV	40K
<b>Series</b>		<b>Size</b>	<b>Wattage and Lumen</b>	<b>Driver</b>	<b>Kelvin Temperature</b>
131 LED Lensed Troffer, Grid Mount		14L 1 x 4	<b>F22W2800L</b> 22 System Watts 2800 Delivered Lumens <b>F30W3600L</b> 30 System Watts 3600 Delivered Lumens <b>F35W4100L</b> 35 System Watts 4100 Delivered Lumens <b>F40W4600L</b> 40 System Watts 4600 Delivered Lumens <b>F48W5400L</b> 48 System Watts 5400 Delivered Lumens <b>F57W6400L</b> 57 System Watts 6400 Delivered Lumens	DMV 0-10V Dimming	<b>30K</b> 3000K <b>35K</b> 3500K <b>40K</b> 4000K <b>50K</b> 5000K
<b>Lens Material</b>					
A Prismatic Acrylic #12 Pattern					
					<b>Options</b>
					<b>WP</b> 6 ft. 3 wire 18 gauge whip <b>WP10</b> 6 ft. 4 wire 18 gauge whip <b>EM</b> 10W Battery Backup for 90mins

\*Consult for more options

Catalog Number:
Notes: